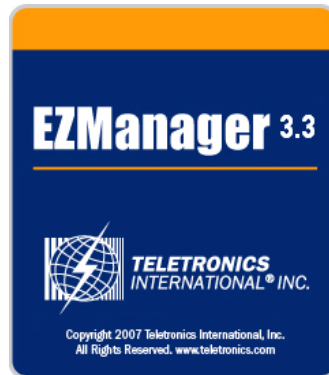
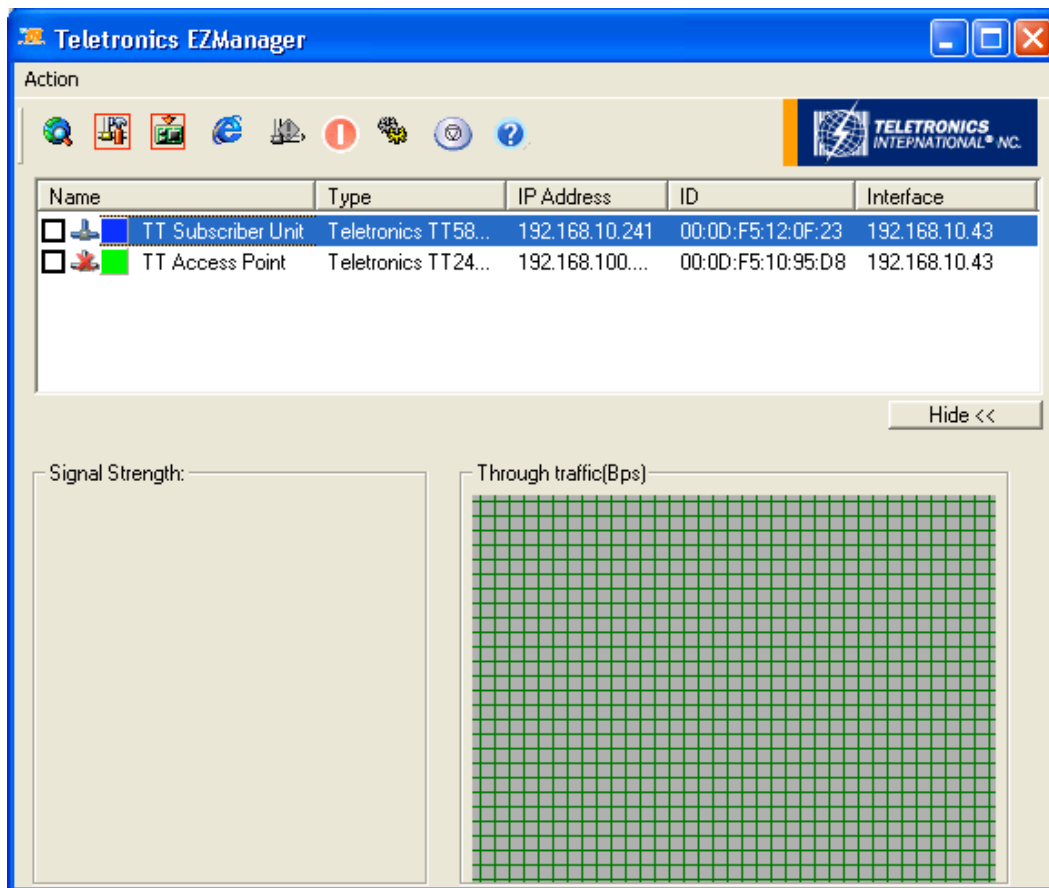


New features of EZManager 3.3



This newly-released version 3.3 of EZManager software provides additional security measures to password-protect a TT Firmware Upgrade or to Set/Change the IP Address for the TT devices.

1. Application Interface:



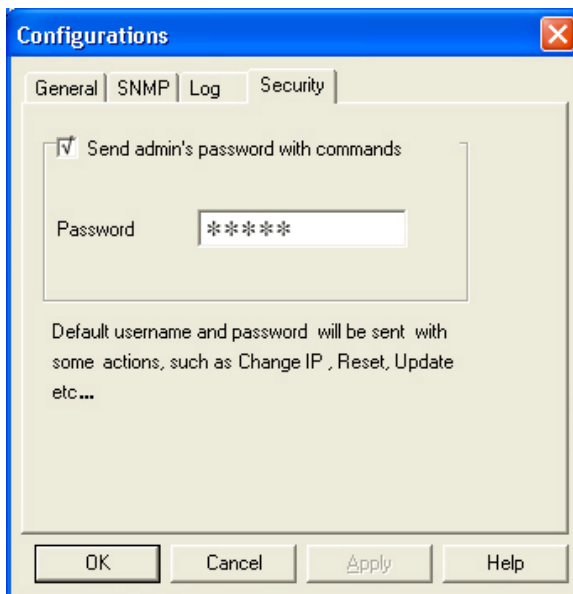
In the Application Interface, the “Set IP”  and “Upgrade”  buttons are now password protected.

2. Administrator Password.

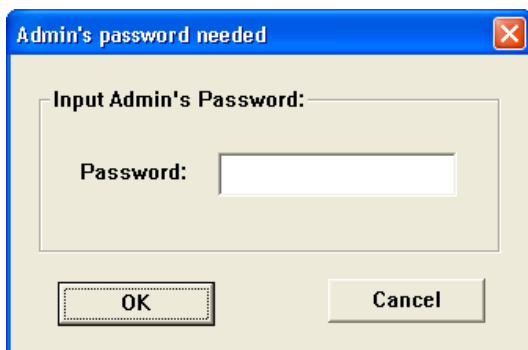
EZManager 3.3 requires the user to insert the correct “administrator” password for the selected TT device in order to upgrade the TT Firmware or set/change the IP Address. Previous versions of EZManager software allowed these tasks to be performed without an administrator password.

3. How to set Administrator Password.

The user can set the administrator password in EZManager’s setting page. To open the setting page, click the “Configurations” button  in the tool bar or click the “Action” menu and choose “Settings”. Then click the “Security” page and enable the “*Send admin’s password with commands*” option and input “administrator password” in Password field.



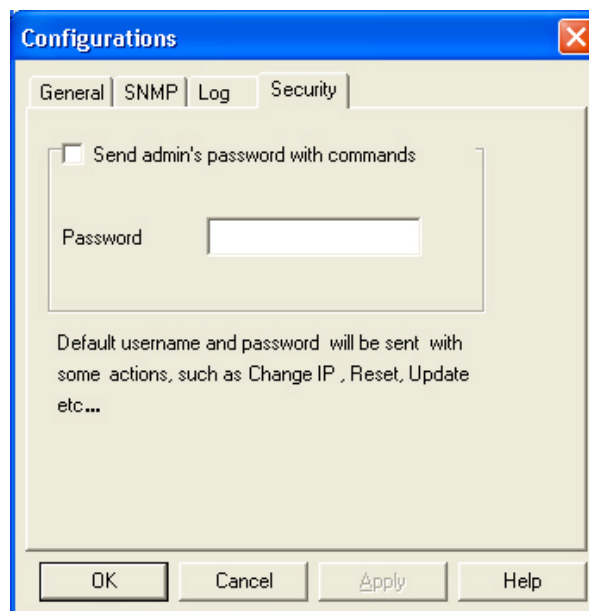
If the administrator password inserted is correct the TT Firmware upgrade and/or IP Address change will finish successfully. If the administrator password inserted is incorrect or the “Password” field is intentionally left blank (to prevent the password from automatically being saved on the computer), then the following window will pop up, at which time the user must insert the correct administrator password to successfully complete the upgrade/change:



4. Compatibility.

EZManager	TT firmware	Compatibility
3.3	3.14 or newer	User will need password to upgrade/change TT
3.3	3.11 or older	Requires user to “uncheck” “ <i>send admin’s password with commands</i> ” to upgrade/change TT
3.2 or older	3.14 or newer	EZManager 3.2 can not change any setting on TT
3.2 or older	3.11 or older	User can upgrade/change TT w/o password

- New EZManager 3.3 and new TT Firmware
(Follow steps in # 3 above)
- New EZManager 3.3 and old TT Firmware
(Requires user to “uncheck” “*send admin’s password with commands*” in the “Configurations” window)



- Old EZManager software and new TT Firmware
(Requires new installation of new EZManager 3.3 software)
- Old EZManager software and old TT Firmware
(Functions “as is” without password protection)